



National Institute for
Health Research

NIHR - supporting life sciences research across the innovation pathway

Dr Matthew Hallsworth

NIHR Office for Clinical Research Infrastructure (NOCRI)



@NIHR_NOCRI



/nihr-office-for-clinical-research-infrastructure

The Innovation Pathway

INVENTION

EVALUATION

ADOPTION

DIFFUSION

Creation

- new things
- new ideas
- new techniques
- new approaches

Assessment

- new things
- new ideas
- new techniques
- new approaches

Uptake

- new things
- new ideas
- new techniques
- new approaches

Spread

- new things
- new ideas
- new techniques
- new approaches

Basic Research

Applied Research

Commissioning

Patient Care

**MRC & Charities,
Inventors**

NIHR

**NHS
Commissioners**

**Providers of NHS
services**

- Better Quality
- Better Value

What does the NIHR infrastructure offer?

National Institute for Health Research



Access to the leading clinical research expertise across the country



Cutting-edge research facilities embedded in the NHS and Universities



Expert support for the set up and delivery of clinical trials on a national basis



Well characterised cohorts of patients suitable for research, including ability to recall based on genotype and phenotype



Signposting to relevant funding schemes

NIHR Clinical Research Infrastructure

National Institute for
Health Research



Invention

Evaluation

Adoption

**Biomedical Research
Centres**

**Clinical Research
Facilities**

**Experimental Cancer Medicine
Centres**

**Translational Research
Collaborations**

**Medtech and In vitro diagnostic
Co-operatives**

**Clinical Research
Network**

**Collaborations for Leadership in Applied Health
Research and Care**



The NIHR has transformed the research landscape by investing biomedical research facilities and establishing collaborations that drive innovation in key areas.

This infrastructure works collaboratively with the life sciences industry, including SMEs.

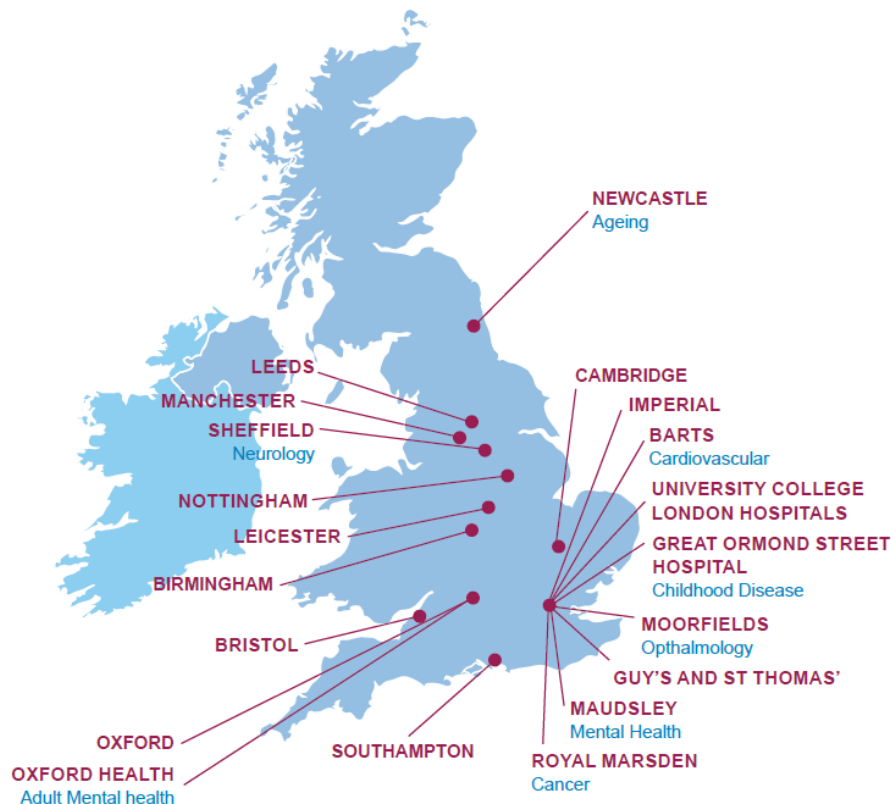
NIHR Biomedical Research Centres



National Institute for
Health Research

Commenced April 2017

**New £816 million
investment in health
research**



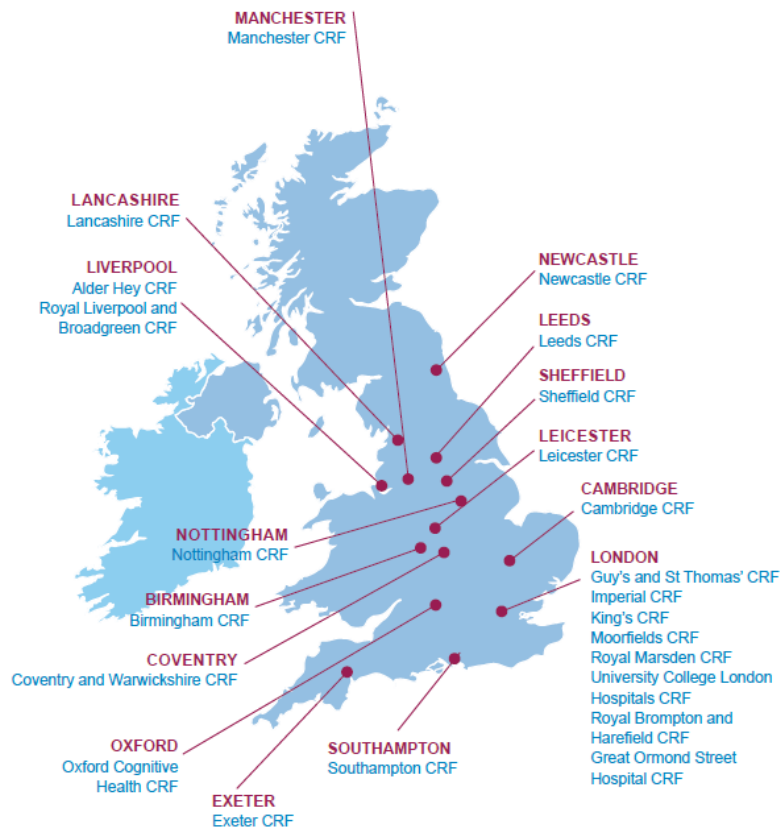
NIHR Biomedical Research Centres will continue to provide a strong foundation for expertise and leadership in translational research across a broad range of disease and therapy areas, including:

- Antimicrobial resistance
- Cancer
- Cardiovascular disease
- Child health
- Dementia and neurodegenerative disease
- Eye disease
- Endocrinology and metabolic medicine
- Gastrointestinal disease
- Hearing health
- Infection and immunity
- Liver disease
- Mental health
- Musculoskeletal disease
- Nutrition and lifestyle
- Respiratory disease

NIHR Clinical Research Facilities



National Institute for
Health Research



Dedicated, purpose built facilities, where specialist clinical research and support staff delivering commercial and non-commercial experimental medicine studies.

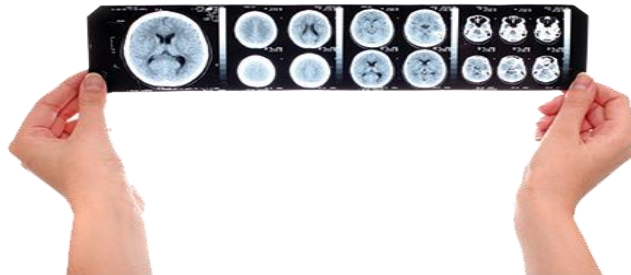
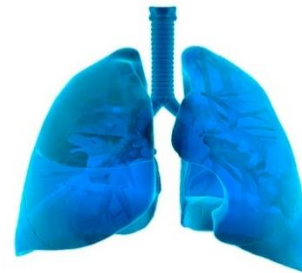
Life science companies can access assistance for their studies throughout the research process from study design to data collection and management. NIHR CRFs are designed to support high-intensity studies and overnight stays.

Collaborations for early phase translational research



NIHR Joint and Related Inflammatory Diseases
Translational Research Collaboration

NIHR Inflammatory Respiratory Disease
Translational Research Collaboration



NIHR Dementia
Translational Research Collaboration

NIHR BioResource for Common and Rare Diseases

- A panel of around 100,000 volunteers nationally
 - with and without health conditions
 - willing to be approached to participate in research studies investigating the links between genes, the environment, health and disease.
- Volunteers donate their DNA via a blood or saliva sample and complete a health questionnaire to match them to specific research studies.



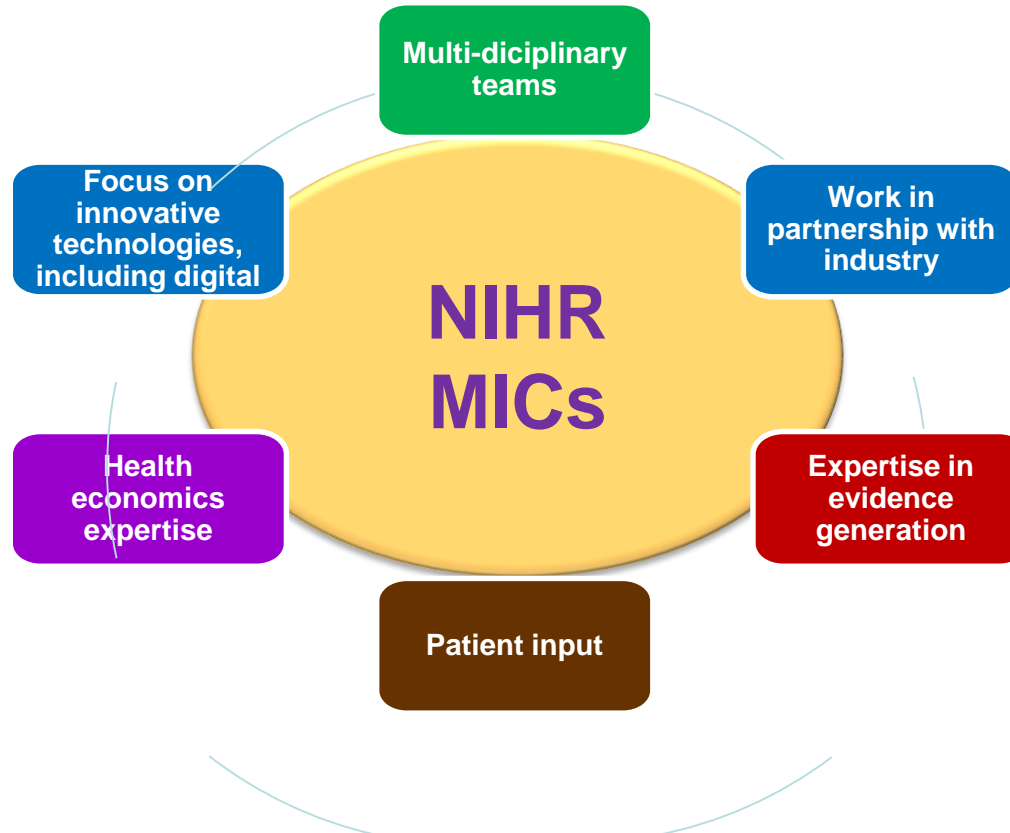
NIHR Medtech and In vitro diagnostic Co-operatives (MICs)



National Institute for
Health Research

- Centres have been chosen that focus on:
 - the development of medical technologies in areas of high patient morbidity and
 - evidence for diagnostic tests leading to benefits in healthcare services and the quality of life of NHS patients.
- New funding of £14.25m over 5 years will be start from January 2018.

NIHR Medtech and In vitro diagnostic Co-operatives (MICs)

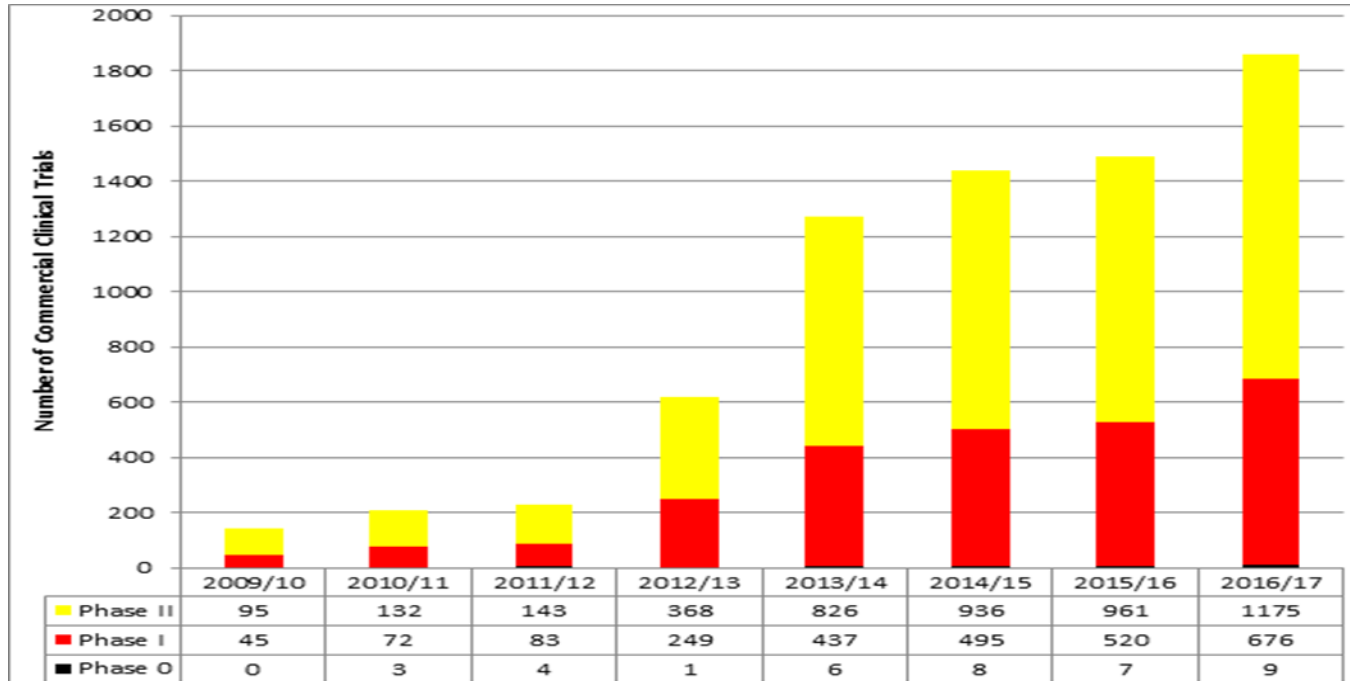


NIHR Medtech and *In vitro* Diagnostic Co-operatives (MICs)



Early phase commercial contract and collaborative trials

NIHR translational infrastructure

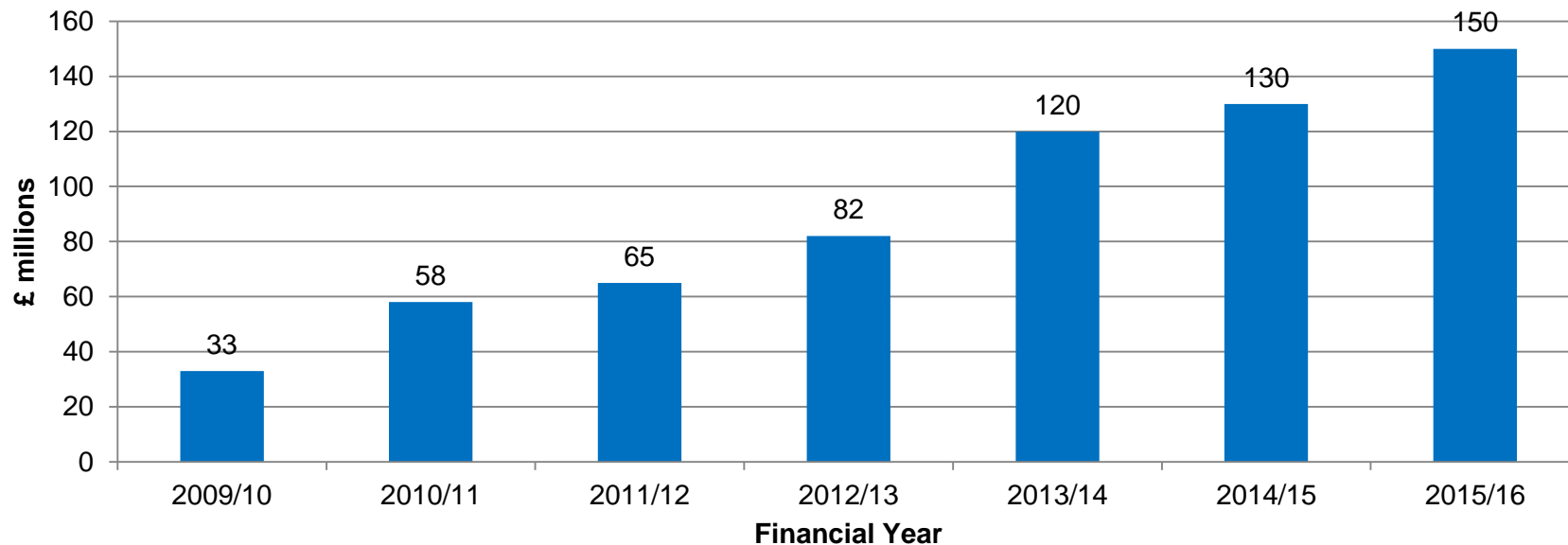


Industry investment into NIHR Research Centres and Facilities



National Institute for Health Research

Value of industry contract and collaborative studies supported by the NIHR translational research infrastructure



NIHR Clinical Research Network

- 15 Local Clinical Research Networks (LCRNs)
- All 30 research therapy areas delivered through each LCRN
- Boundaries align with AHSNs
- Allows flexible deployment of resources
- Easier for research community to navigate



NIHR Clinical Research Network

National Institute for Health Research



FEASIBILITY

Manage and deliver:

- Early Feedback
- Site Intelligence
- Site Identification



COMMERCIAL COSTING TEMPLATES

- Support use
- Manage templates
- Trust, Primary Care & Device versions



HRA APPROVALS SYSTEM FOR GAINING NHS PERMISSION

- Support use



MODEL AGREEMENTS

- Support use



STUDY MANAGEMENT

- Collect & collate data
- Performance manage study

Feasibility

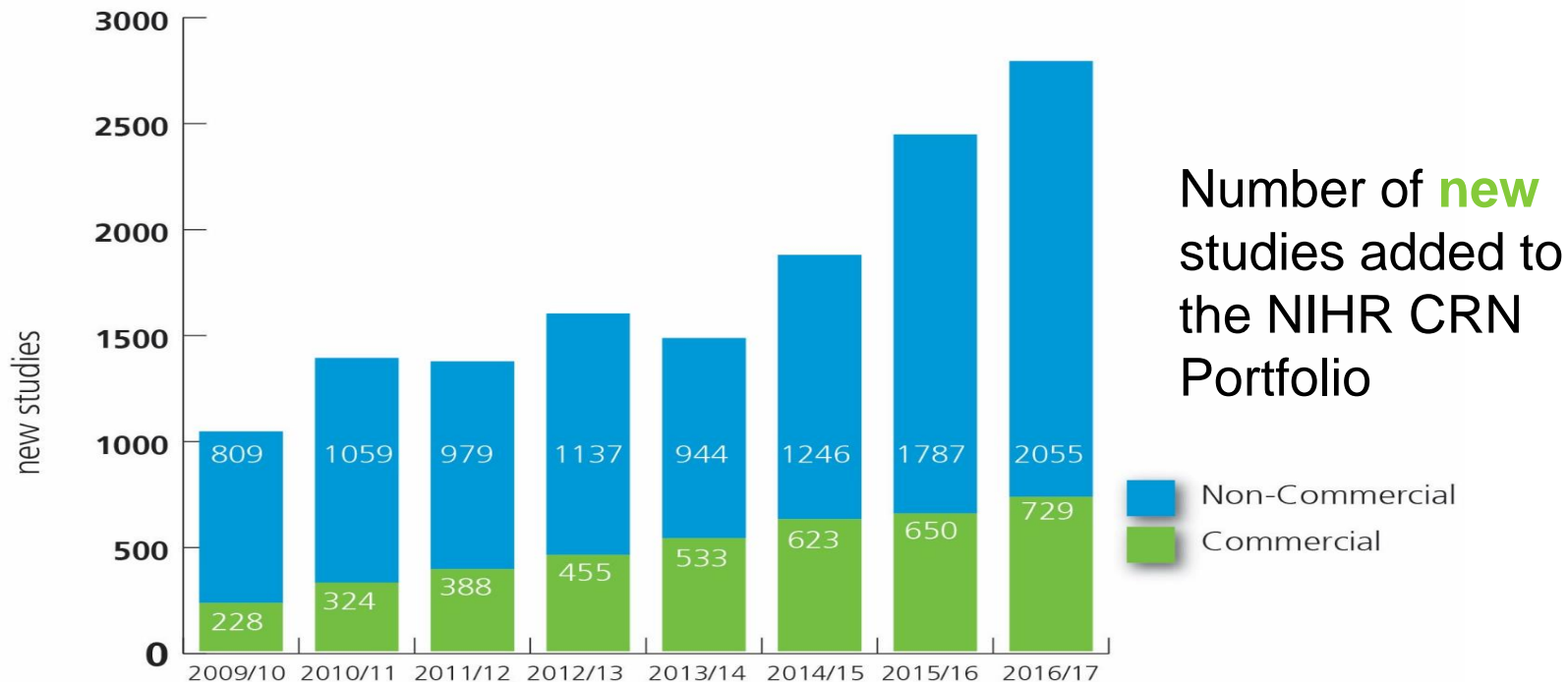
Set-up

Delivery

NIHR Clinical Research Network Study Portfolio

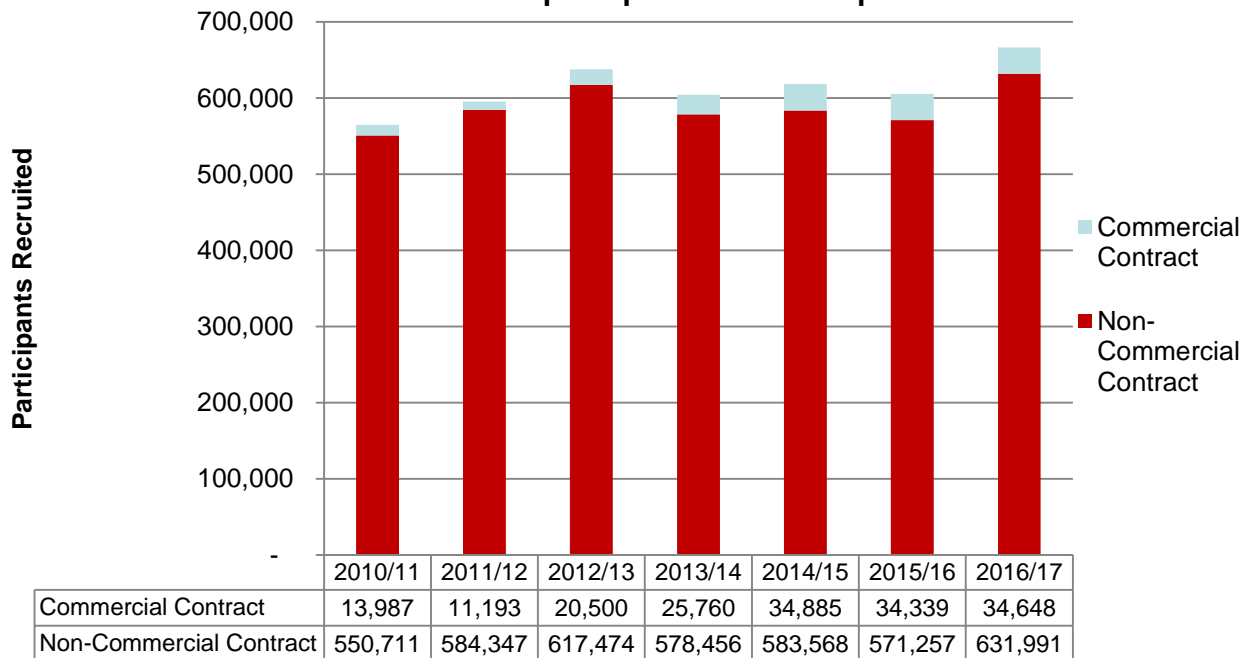


National Institute for
Health Research



Number of participants recruited to studies supported by the NIHR CRN

Over the past seven years, the NIHR CRN has supported over 4 million people to take part in clinical research in the NHS



- 73% of commercial studies and 83% of non-commercial studies delivered to time & target
- 99.9% Trusts are recruiting to studies
- 24 global and four European first patients

What NIHR offers to research partners

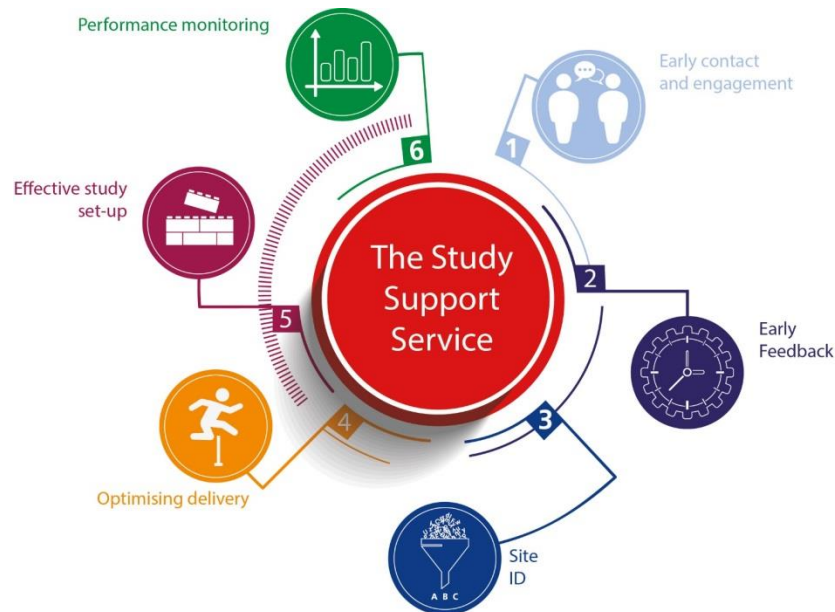
- Easy and rapid connections to the country's leading experimental medicine / translational research experts and research facilities through NOCRI
- Support with study feasibility, set-up and delivery through the Clinical Research Network
- Clinical input into study design
- Steer on therapeutic/technology development to ensure it best meets clinical need
- Early go/no go decisions
- Links to non-clinical experts e.g. engineers, statisticians, IT experts, health economists, patient and public involvement (PPI)
- ***Clinical evidence generation throughout the research pathway***

Working with the NIHR and NHS

For support undertaking clinical research across the NIHR Infrastructure and in the NHS contact the **Study Support Service**

supportmystudy@nihr.ac.uk

0113 343 4555



Thank you!
nocri@nihr.ac.uk